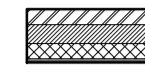


NOTE:  
ALL DIMENSIONS MUST BE CHECKED ON SITE AND NOT SCALED FROM THIS DRAWING.  
FOR USE IN PRECISE NAMED LOCATION ONLY. COPYRIGHT RESERVED.

**WALL CONSTRUCTION KEY**

**EXTERNAL WALLS**  
external brick facing wall  
-102mm brickwork:  
-150mm Crown Dritherm full fill insulation slab:  
-100mm dense conc. blocks - min 3.6N/mm<sup>2</sup>:  
(7N/mm<sup>2</sup> below dpc)  
-Dot & dab 12.5mm plasterboard:



timber frame - fibre cement cladding  
-Marley Eternit, Pictura fibre cement cladding  
-38mm x 25mm battens and counter battens fixed @ max 600mm centres:  
-Kingspan Nilvent breathable sarking membrane:  
-9mm OSB 3 sheathing:  
-140mm x 50mm to S.E. details:  
-120mm Kingspan Kooltherm K112 framing board insulation:  
-37.5mm Kingspan Kooltherm K118 insulated plasterboard :



**dormer cheeks**  
-code 5 lead (welled joints):  
-18mm WBP plywood  
-38mm x 25mm battens and counter battens fixed @ max 600mm centres:  
-Kingspan Nilvent breathable sarking membrane:  
-9mm OSB 3 sheathing  
-140mm x 50mm to S.E. details:  
-120mm Kingspan Kooltherm K112 framing board insulation:  
-37.5mm Kingspan Kooltherm K118 insulated plasterboard:



**INTERNAL WALLS**  
internal non-loading bearing timber stud partition  
-1 layer of 12.5mm Gyproc plasterboard + 75mm Iso wool  
-75mm timber studwork  
-1 layer of 12.5mm Gyproc plasterboard + 75mm Iso wool



internal loading bearing masonry walls  
-Dot & dab 12.5mm plasterboard:  
-100mm dense conc blocks - min 3.6N/mm<sup>2</sup>:  
(7N/mm<sup>2</sup> below dpc)  
-Dot & dab 12.5mm plasterboard:



internal loading bearing masonry walls - Robust Detail E-WM-22  
-Dot & dab 12.5mm plasterboard:  
-100mm dense conc blocks - min 3.6N/mm<sup>2</sup>:  
(7N/mm<sup>2</sup> below dpc)  
-140mm Crown-Knauf Earthwool® Masonry Party Wall Slab insulation or similar approved:  
-100mm dense conc blocks - min 3.6N/mm<sup>2</sup>:  
(7N/mm<sup>2</sup> below dpc)  
-Dot & dab 12.5mm plasterboard:



**FIRE SEPARATION KEY**

- 30minute fire resistant construction
- 60minute fire resistant construction
- Smoke ventilation window:  
The window to provide minimum 1m<sup>2</sup> opening.  
Window to be connected to fire alarm system and open to 140 degrees when triggered to ensure effective smoke ventilation. Approved system to include battery backup and motorised opening.

DRAWINGS TO BE READ IN CONJUNCTION WITH ENGINEERS STRUCTURAL / CIVIL DRAWINGS AND SPECIFICATION

- Indicates FLOOR JOIST DIRECTION
- Indicates RAFTER DIRECTION

NOTE CAREFULLY : ALL ELECTRICAL WORK IS TO BE UNDERTAKEN BY A QUALIFIED AND COMPETENT PERSON ALL IN ACCORDANCE WITH PART P OF THE BUILDING REGULATIONS 2006.

- self-contained mains operated smoke alarm to BS 5446: Part 1, detector to be min. 300mm from walls and light fittings
- self-contained mains operated heat alarm to BS 5446 Part 2: 2003, detector to be min. 300mm from walls and light fittings
- self-contained mains operated carbon monoxide alarm to BS 7860: detector to be min. 300mm from walls and light fittings

**GENERAL DRAWING NOTES**

This drawing is to be read in conjunction with Anderson Orr Architects specification and schedules.  
For all steel and timber beams, roof structure and lintels required refer to Structural Engineer's drawings  
For all foul and surface water drainage layout refer to Civil Engineer's drawings  
DRAWING MUST BE PRINTED IN COLOUR  
PS - Padstone: Refer to Structural Engineer's details  
S.E. = Structural Engineer's details

**Movement Joints and padstones to S.E. details**

**PRELIMINARY**

revision date description  
status

**WORKING**

project title  
FORMER, SHELLEY ARMS, 114 CRICKET ROAD, OXFORD  
drawing title  
PLOTS 4 - 7 SECOND FLOOR PLAN  
client name  
KEBLE HOMES LTD  
first issued 16/08/17 drawn IG scale 1:50 @ A2  
job/drawing no/revision

15058 - WP4032 P1 -

The Studio, 70 Church Road, Wheatley, Oxford, OX33 1LZ  
01865 873936 | info@andersonorr.com | www.andersonorr.com

Second Floor

