

NOTE:
ALL DIMENSIONS MUST BE CHECKED ON SITE AND NOT SCALED FROM THE DRAWINGS.
FOR USE IN PRE-CISE NAMED LOCATION ONLY. COPYRIGHT RESERVED.

WALL CONSTRUCTION KEY

- EXTERNAL WALLS**
- external brick facing wall
 - 102mm brickwork
 - 150mm Crown Dattorm full fill insulation slab
 - 100mm dense conc. blocks - min 3.6N/mm²
 - Dot & dab 12.5mm plasterboard
 - timber frame - fibre cement cladding
 - Marley Eternit, Pictura fibre cement cladding
 - 30mm x 25mm battens and counter battens fixed @ max 600mm centres
 - Kingspan Fibrevent breathable sarking membrane
 - 140mm x 50mm to S.E. details
 - 120mm Kingspan Kooltherm K12 framing board insulation
 - 37.5mm Kingspan Kooltherm K118 insulated plasterboard

- dormer cheeks**
- code 5 lead (welded joints)
 - 18mm WSP plywood
 - 30mm x 25mm battens and counter battens fixed @ max 600mm centres
 - Kingspan Fibrevent breathable sarking membrane
 - 4mm OSB 3 sheathing
 - 140mm x 50mm to S.E. details
 - 120mm Kingspan Kooltherm K12 framing board insulation
 - 37.5mm Kingspan Kooltherm K118 insulated plasterboard

- INTERNAL WALLS**
- Internal non-loading bearing timber stud partition
 - 1 layer of 12.5mm Gyproc plasterboard + 75mm kowool
 - 75mm timber studwork
 - 1 layer of 12.5mm Gyproc plasterboard + 75mm kowool
 - Internal loading bearing masonry walls
 - Dot & dab 12.5mm plasterboard
 - 100mm dense conc. blocks - min 3.6N/mm²
 - Dot & dab 12.5mm plasterboard

- internal loading bearing masonry walls - Robust Detail E-WM-22**
- Dot & dab 12.5mm plasterboard
 - 100mm dense conc. blocks - min 3.6N/mm²
 - 150mm Crown Knool Earthwool® Masonry Party Wall Sarking insulation or similar approved
 - 100mm dense conc. blocks - min 3.6N/mm²
 - Dot & dab 12.5mm plasterboard

FIRE SEPARATION KEY

- 30minute fire resistant construction
- 40minute fire resistant construction
- Smoke ventilation window:
The window to provide minimum 1m² opening
Window to be connected to fire alarm system and open to 140 degrees when triggered to ensure effective smoke ventilation. Approved system to include battery backup and motorised opening.

DRAWINGS TO BE READ IN CONJUNCTION WITH ENGINEERS STRUCTURAL / CIVIL DRAWINGS AND SPECIFICATION

- ← indicates FLOOR JOIST DIRECTION
- indicates RAFTER DIRECTION

NOTE CAREFULLY: ALL ELECTRICAL WORK IS TO BE UNDERTAKEN BY A QUALIFIED AND COMPETENT PERSON ALL IN ACCORDANCE WITH PART P OF THE BUILDING REGULATIONS 2006.

- SD self-contained mains operated smoke alarm to BS 5446: Part 1, detector to be min. 300mm from walls and light fittings
- HD self-contained mains operated heat alarm to BS 5446: Part 2, 2003, detector to be min. 300mm from walls and light fittings
- CD self-contained mains operated carbon monoxide alarm to BS 7860, detector to be min. 300mm from walls and light fittings

GENERAL DRAWING NOTES

This drawing is to be read in conjunction with Anderson Orr Architects specification and schedules.
For all steel and timber beams, roof structure and linings required refer to Structural Engineer's drawings.
For all foul and surface water drainage layout refer to Civil Engineer's drawings.

DRAWING MUST BE PRINTED IN COLOUR
PS - Packstone: Refer to Structural Engineer's details
S.E. - Structural Engineer's details

Movement Joints and padstones to S.E. details

PRELIMINARY

revision date description
status

WORKING

prepared by:
FORMER, SHELLEY ARMS, 114 CRICKET ROAD, OXFORD

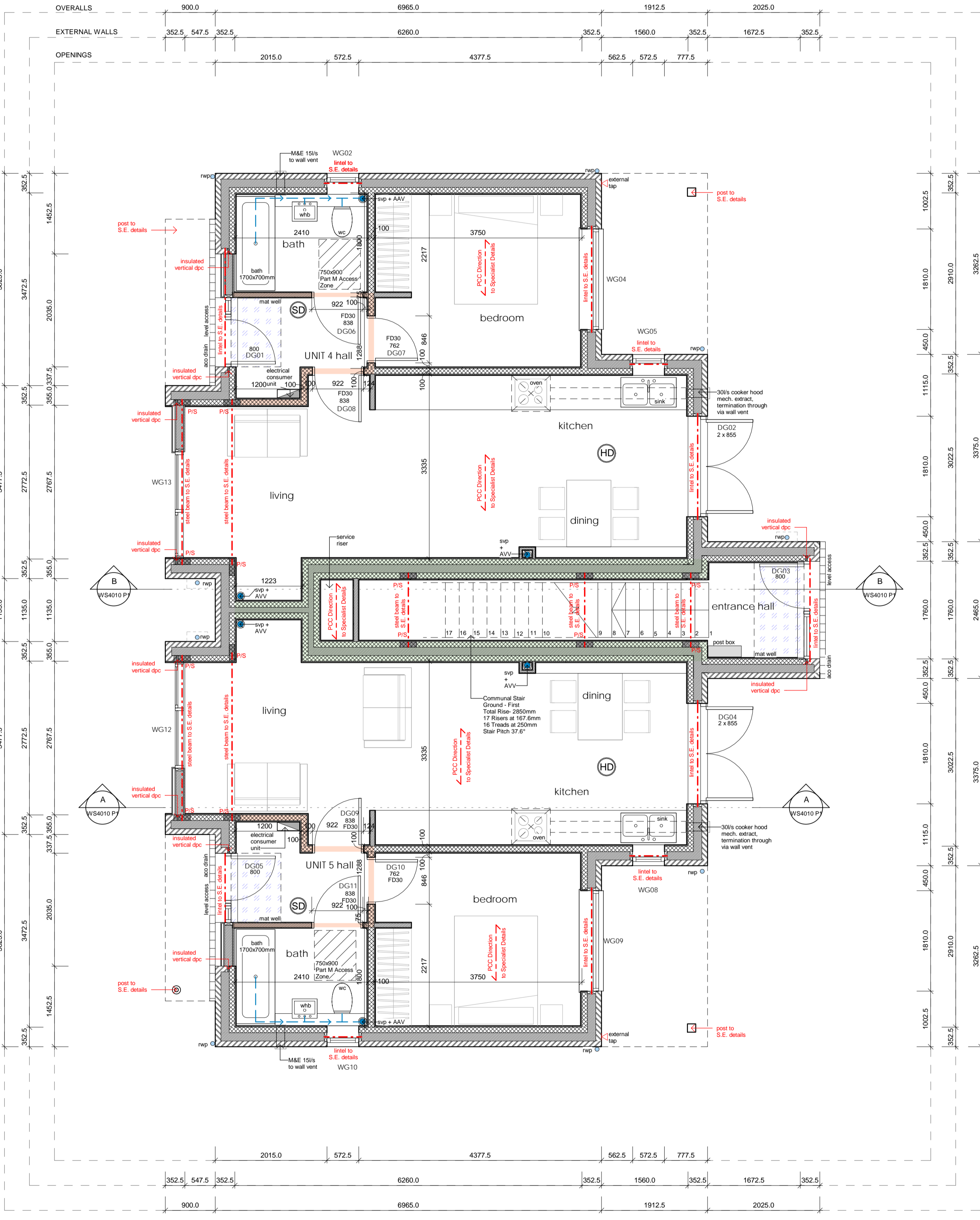
drawing title:
PLOTS 4 - 7 GROUND AND FIRST

client name:
KEBLE HOMES LTD

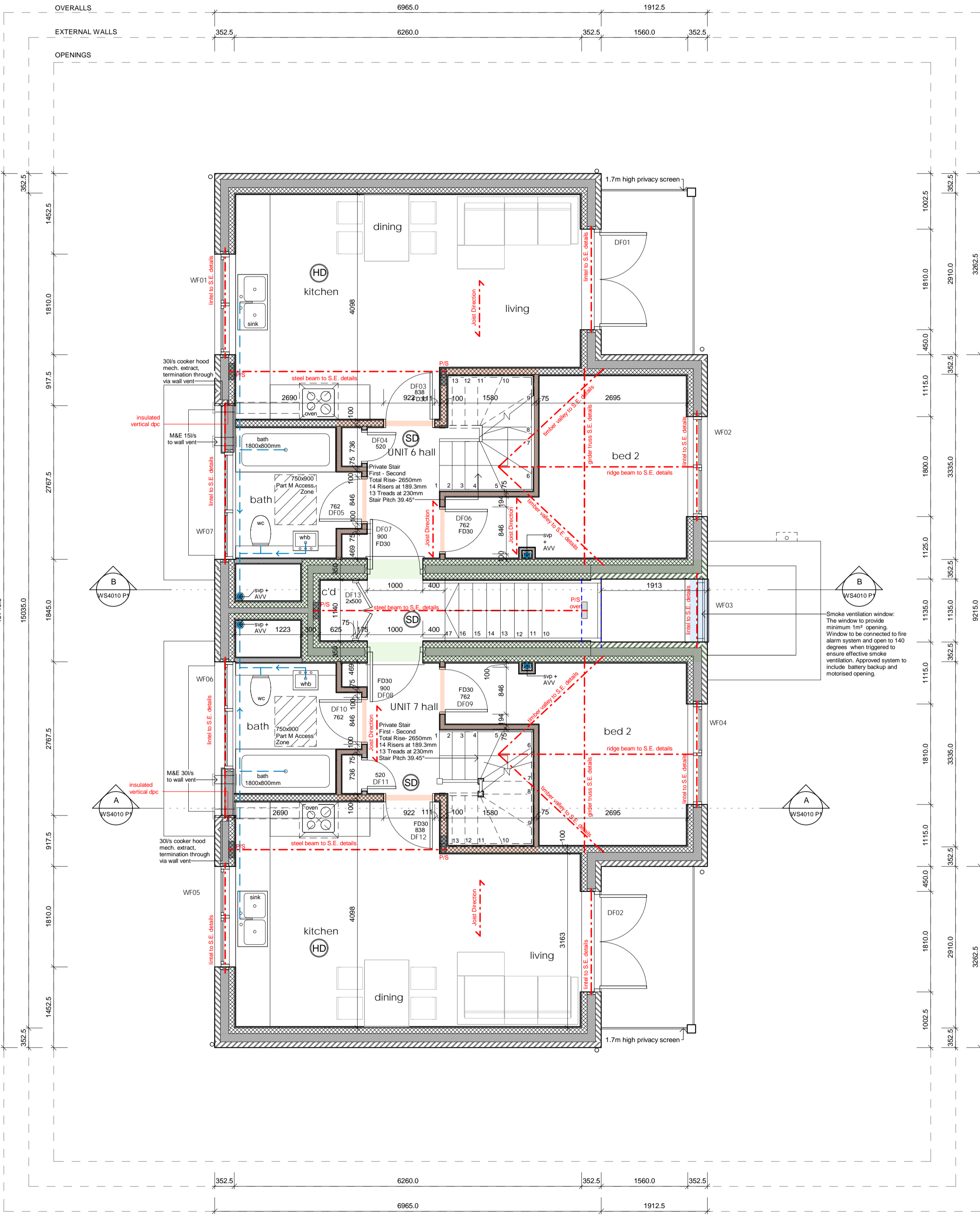
first issued: 16/08/17
drawn: IG
scale: 1:50 @ A1

15058 - WP4031 P1 -

The Studio, 70 Church Road, Wheatley, Oxford, OX33 1LZ
01865 873956 | info@andersonorr.com | www.andersonorr.com



Ground Floor



First Floor